

Important Traffic Management (TM) Information

Following the postponement of the proposed A429 night-time closures due to freezing weather, it has been agreed we shall re-commence this closure and associated works as below.

Traffic Switch from Old to New Road

Firstly, the plan on Page 2 shows how the TM will be from **Midday Monday 1st March** when we switch traffic from the Old Hullavington Road **onto the new section of road**. This had been planned until the weather forced us to postpone the night-time closures.

The 3-way lights will remain in operation. The 3rd traffic light head that is currently on the Old Hullavington Road will move across to our new road.

There will be some associated signage directing traffic to Dyson, Wellington Place and M4 Karting, businesses, and residents.

We shall be kerbing across the old road (**Hullavington Road**) junction to the A429 and excavating a section of it, closing it permanently.

A429 5 x Night-time Road Closures from Monday 1st March

We shall be closing the road from 8pm each night until 6am, when the road will then be re-opened.

This involves laying hundreds of tonnes of hot tarmac each night and is very dependent on dry weather with temperatures above 4 degrees Celsius ideally. Light rain is manageable but not prolonged heavy rain and cold or freezing conditions. Adverse weather conditions *may* cause a postponement or delay of some or all the planned work.

Remember, what limited **overnight traffic** there is during closure times to and from Wellington Place, Dyson and the M4 Karting business area **shall need to enter and leave from the Hullavington direction**.

Diversion route signage shall be in place in accordance with the approved diversion routes (see page 3 and 4).

The 3-way Temporary Traffic Lights at the new link road junction with the A429 will be reactivated each day after each night shift.

Following the completion of this night-time surfacing, and road markings, we will be able to take down the current 3-way lights set up and have the roundabout in operation.

All Maps are available on our [community website](#) for the scheme. Thank you for your cooperation and apologies for any inconvenience caused.



Want to get in touch?

Your Public Liaison Officer for the A429 Hullavington Link Road Scheme is Jim Aitken. He can be contacted by

T: 0330 041 4637*

E: A429@alungriffiths.co.uk

* Calls to this number are charged at national call rates and included in inclusive minute plans from landlines and mobiles

Calls are monitored out of normal work hours and a voicemail facility is available.

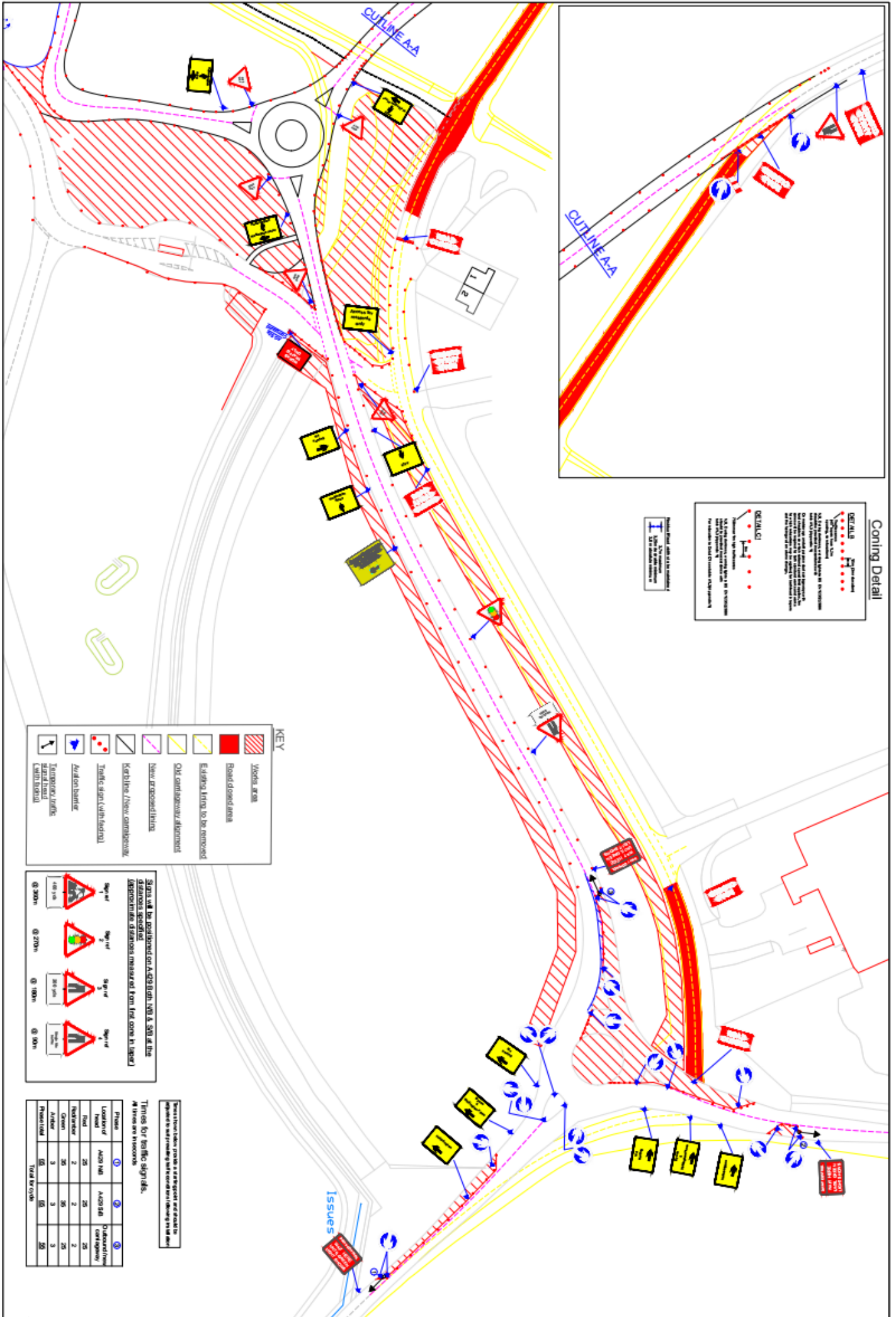
Please check out our project website which includes Frequently Asked Questions

community.alungriffiths.co.uk

If you would like to subscribe to receive future Newsletters and Bulletins, please click [HERE](#) and complete the online form for Mail Chimp. OR use this QR code opposite.



SCAN ME



Coning Detail

DETAIL

- Yellow cones
- Red cones
- Blue cones
- Orange cones
- Green cones
- Purple cones
- Grey cones
- White cones
- Black cones

NOTE: CONES MUST BE PLACED IN A LINE AND NOT IN A CURVE. THE CONES MUST BE PLACED AT THE END OF THE ROAD AND NOT IN THE MIDDLE. THE CONES MUST BE PLACED AT THE END OF THE ROAD AND NOT IN THE MIDDLE. THE CONES MUST BE PLACED AT THE END OF THE ROAD AND NOT IN THE MIDDLE.

DETAIL 2

NOTE: THIS IS A DETAIL OF THE CONING SET-UP. THE CONING SET-UP MUST BE PLACED AT THE END OF THE ROAD AND NOT IN THE MIDDLE. THE CONING SET-UP MUST BE PLACED AT THE END OF THE ROAD AND NOT IN THE MIDDLE.

KEY

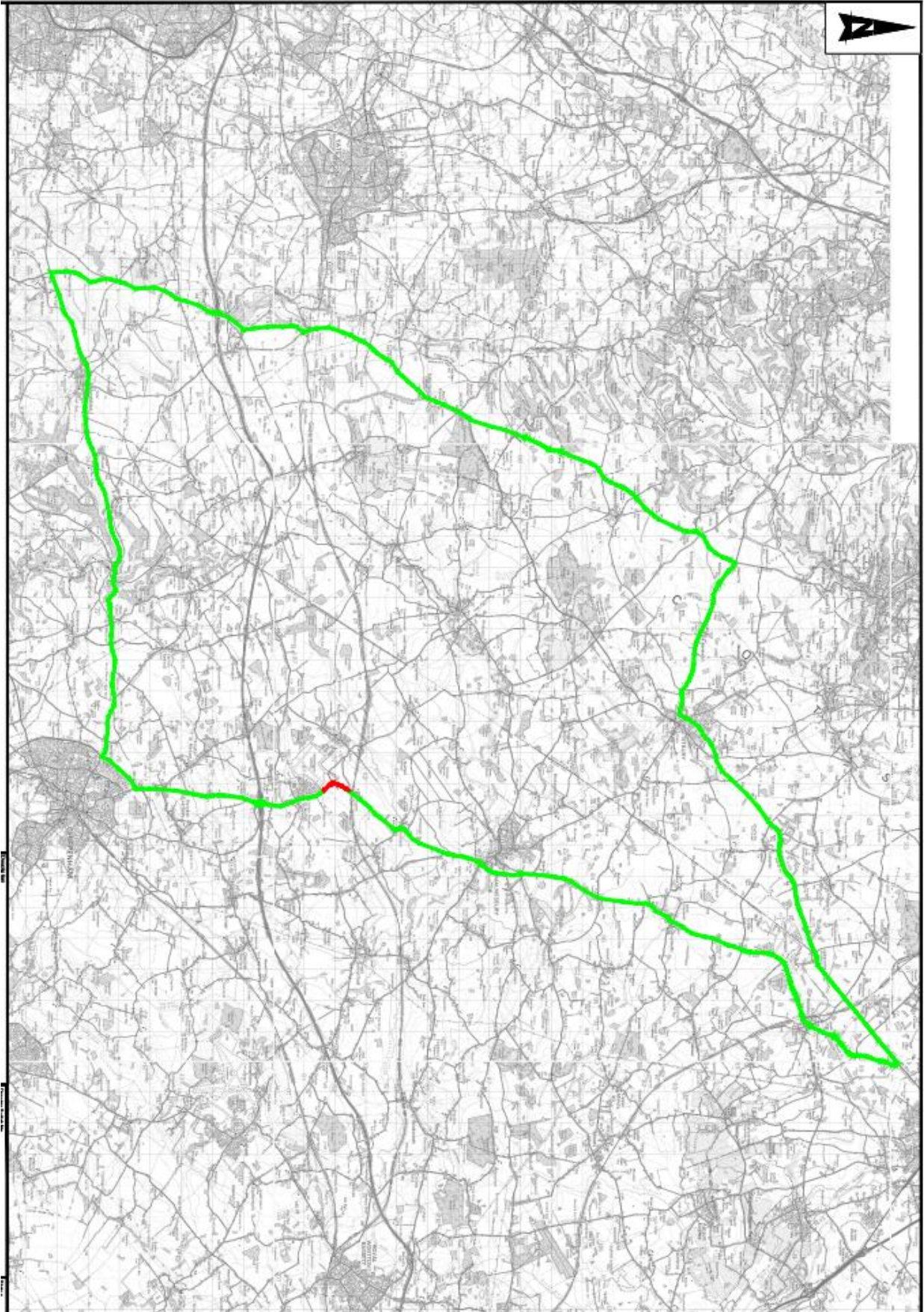
- Work area
- Road closure area
- Kerbside area to be removed
- Old carriageway alignment
- New proposed lines
- Kerbside / New carriageway
- Traffic sign (with distance)
- Aisled barrier
- Temporary traffic sign (with distance)
- Temporary traffic sign (with distance)

Signs will be positioned on A5010th LWS & SWL at the distances specified (approximate distances measured from the cone in line)

- Sign 1: @ 300m
- Sign 2: @ 200m
- Sign 3: @ 100m
- Sign 4: @ 50m

Trains for traffic signs:

Phase	①	②	③
Forward	A5010 SWL	A5010 SWL	Chamberlain
Time	25	25	25
Reverse	2	2	2
Green	30	30	25
Active	3	3	3
Phase total	105	105	25
TOTAL BY PHASE			



Notes

- Limits of work are approximate and are to be agreed on site with the Engineer or Site Representative.

Key

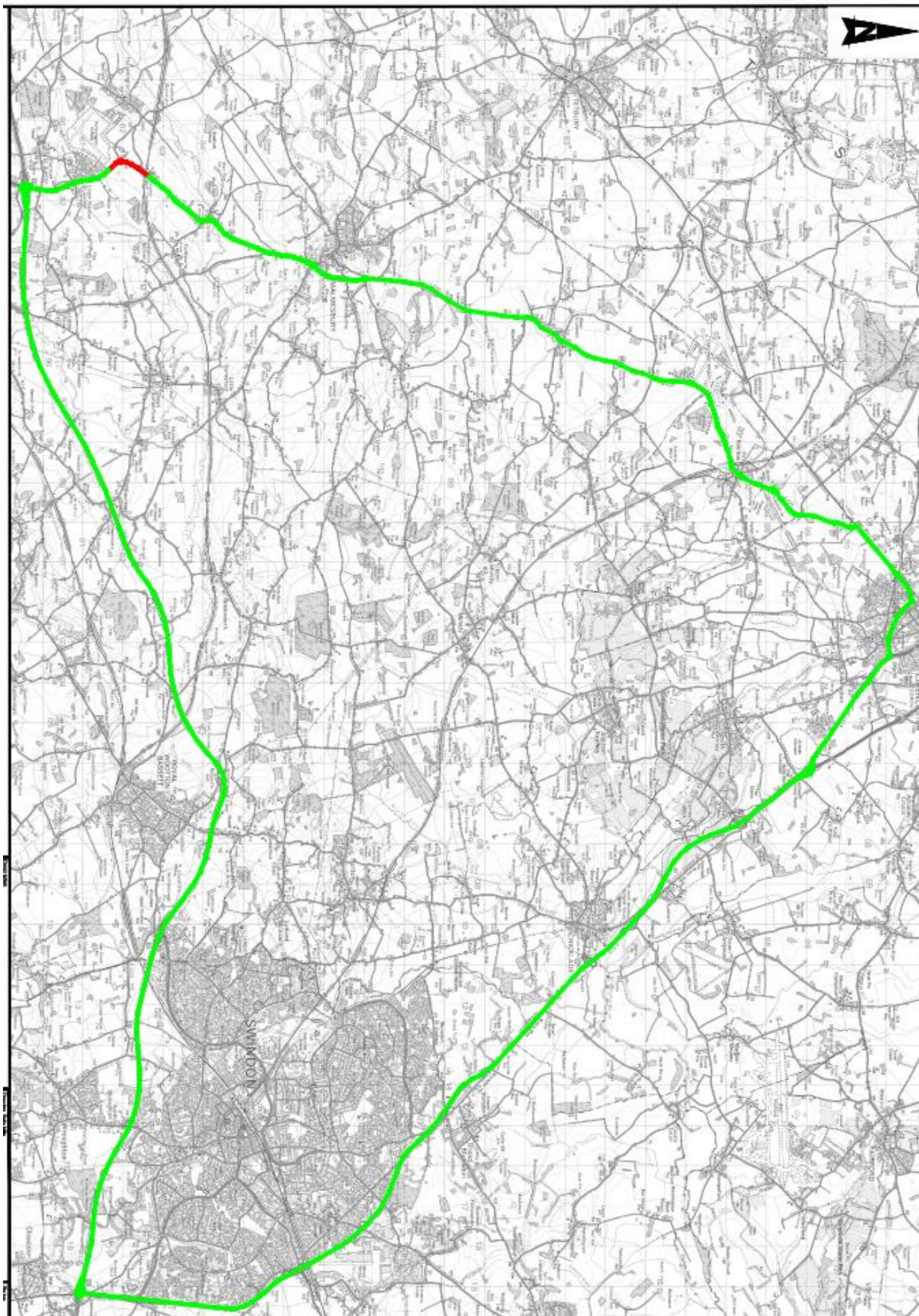
- Proposed Closure
- Proposed Diversion Route

Client Finance Code: 03 31 98
 Work Order No: TBC
 Postal Area: S1111
 USRN: 29800720, 29800719
 Grid Ref: 391012, 161591 to 391036, 161635
 High Street (also page 98 C8)
 Road Speed Limit: 60mph

SAFETY, HEALTH AND ENVIRONMENTAL INFORMATION

<p>It is advised that the reader be aware of all the signs of work and safety and health to be used on site and to be used in accordance with the relevant legislation.</p>
<p>CONTRACT NO:</p>
<p>DATE:</p>
<p>BY:</p>
<p>FOR:</p>
<p>APPROVED BY:</p>
<p>DATE:</p>

A429 5-night Road Closure 01/03/21 to 05/03/21 inclusive HGV Diversion Map



Notes

1. Limits of work are approximate and are to be agreed on site with the Engineer or Site Representative.

Key

- Proposed Closure
- Proposed Diversion Route

Client Reference Code: 03_31_98
 Project Code: 18C
 Project Name: SH11
 ISTRN: 20000720_20000719
 Grid Ref: 391012, 181897 to 391026, 181835
 Project Start Date: Sept 06 C8
 Road Speed Limit: 60mph

SAFETY, HEALTH AND ENVIRONMENTAL

Item	Task / Name of specialist	Start / End Date	Notes
1	SAFETY, HEALTH AND ENVIRONMENTAL		
2	SAFETY, HEALTH AND ENVIRONMENTAL		
3	SAFETY, HEALTH AND ENVIRONMENTAL		
4	SAFETY, HEALTH AND ENVIRONMENTAL		
5	SAFETY, HEALTH AND ENVIRONMENTAL		
6	SAFETY, HEALTH AND ENVIRONMENTAL		
7	SAFETY, HEALTH AND ENVIRONMENTAL		
8	SAFETY, HEALTH AND ENVIRONMENTAL		
9	SAFETY, HEALTH AND ENVIRONMENTAL		
10	SAFETY, HEALTH AND ENVIRONMENTAL		