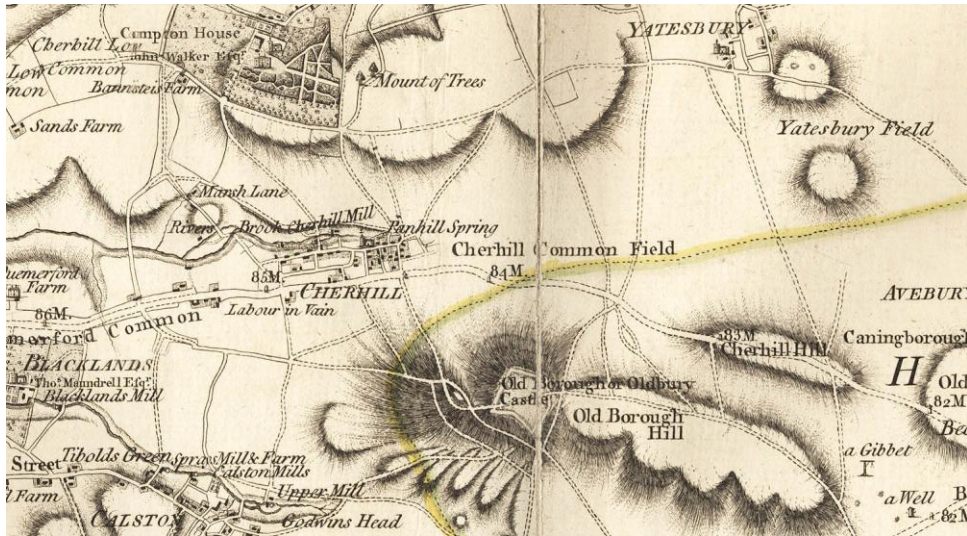


Wiltshire Community History

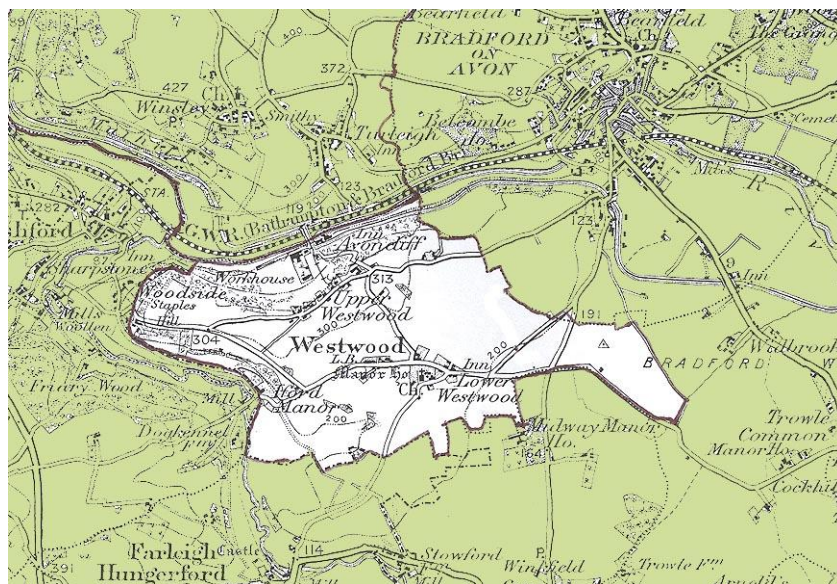
<http://history.wiltshire.gov.uk/community/>

Your parish is one of 160 that have been completed so far on our free Wiltshire history website that provides information on a variety of subjects about every parish in the Wiltshire Council area.

Every completed parish has three maps, from 1773, 1810, and the 1890s; the latter has the modern parish boundary superimposed.



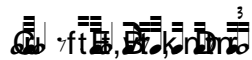
1773



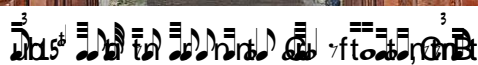
1890

These maps can be downloaded or printed free of charge for local or family history purposes and for educational use.

A specially written brief history ranging from 1,500 to 6,000 words is provided for each parish giving basic historical information, useful for both locals and interested visitors. There is an entry for every church and chapel with a brief history and photographs old and new.



Where the church is unlocked we have taken photographs showing features of architectural interest, wall paintings, furnishings and fittings, and memorials.



Each school that we have found in the parish also has its own entry with a history and photographs. Where we hold the school log books we have used information from

them to show what the school was like from the 1860s, concentrating on the Victorian period as this is particularly useful for Key Stage 2 pupils at the school. Again where possible we have used old and new photographs.



3
♪♪♪ Who ♪ 1906

Other information about the parish includes the census population from 1801 to 2001 (2011 figures will be added as soon as they are available), a select booklist for the parish, archaeological sites, local authors and literary associations, a catalogue of wills from the 1530s to 1857 of people who died in the parish, and details of listed buildings, Ordnance Survey maps and newspapers.

The site is interactive and people can ask questions and receive emailed replies – interesting questions and answers are added to the site. People can also comment on the 5,500+ images on the site.

We continually add material to parishes and would welcome any additional information or images from yourselves that may enhance the entry for your parish.

Other information

We are compiling and uploading timelines for communities and have 23 available at the moment, including one for Wiltshire as a whole.

Our Folk Arts section contains the words of 1,125 folk songs that have been collected in and around Wiltshire. There is also information about the singers, the words of Wiltshire Mummers' plays, and other traditional events.

Verse 1

All in the town of Marlboro',

A rich farmer there did dwell,
He had an only daughter,
And I think her name was Nell.

Verse 2

She had an only sweetheart,
A proper tall young man,
He was one of her father's servants,
And I think that his name was Jan.



So far we have added over 9,000 pages from key works on Wiltshire, mainly from the 18th and 19th centuries. This is an important resource as many of these books are now difficult to obtain.

The site is very popular and we receive comments and e-mails from around the world; in the last four years our images alone have received 1.5 million views and the community pages are viewed by thousands of people every month.

The Local Studies team at the Wiltshire & Swindon History Centre complete about 25 communities each year and are also continually adding images, information and updating earlier entries. We hope to have completed all 261 communities by the autumn of 2015.

